

Gainsborough Bath + Spa Bath

This complicated project involved the conversion of five interconnected Grade II listed buildings into a stunning five-star spa hotel. As Lead Architect, we secured a series of planning and listed building consents and worked closely with the Conservation Officer during construction. We were also responsible for implementing an opulent interior design scheme to all front of house areas.

Originally designed by John Pinch, the building was completed in the 1820s as the United Hospital and was later home to the Bath Technical College. The opulent Bath House experience will tap into the original Roman Bath springs to include the only natural thermal water pools in a hotel in the UK.

Client
Bath Hotel + Spa Ltd

Services
Architecture

Size
99 guest rooms + suites

Interior Designer
Champalimaud Design

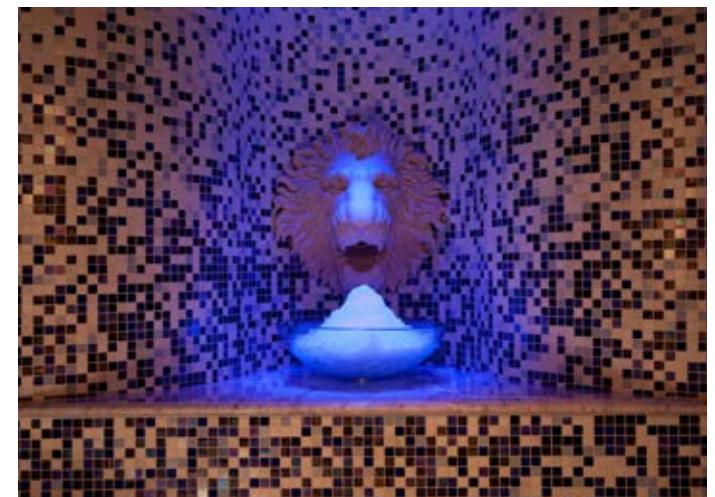
Awards
2016 European Hospitality
Awards, Opening of the Year
(Renovation or Conversion)

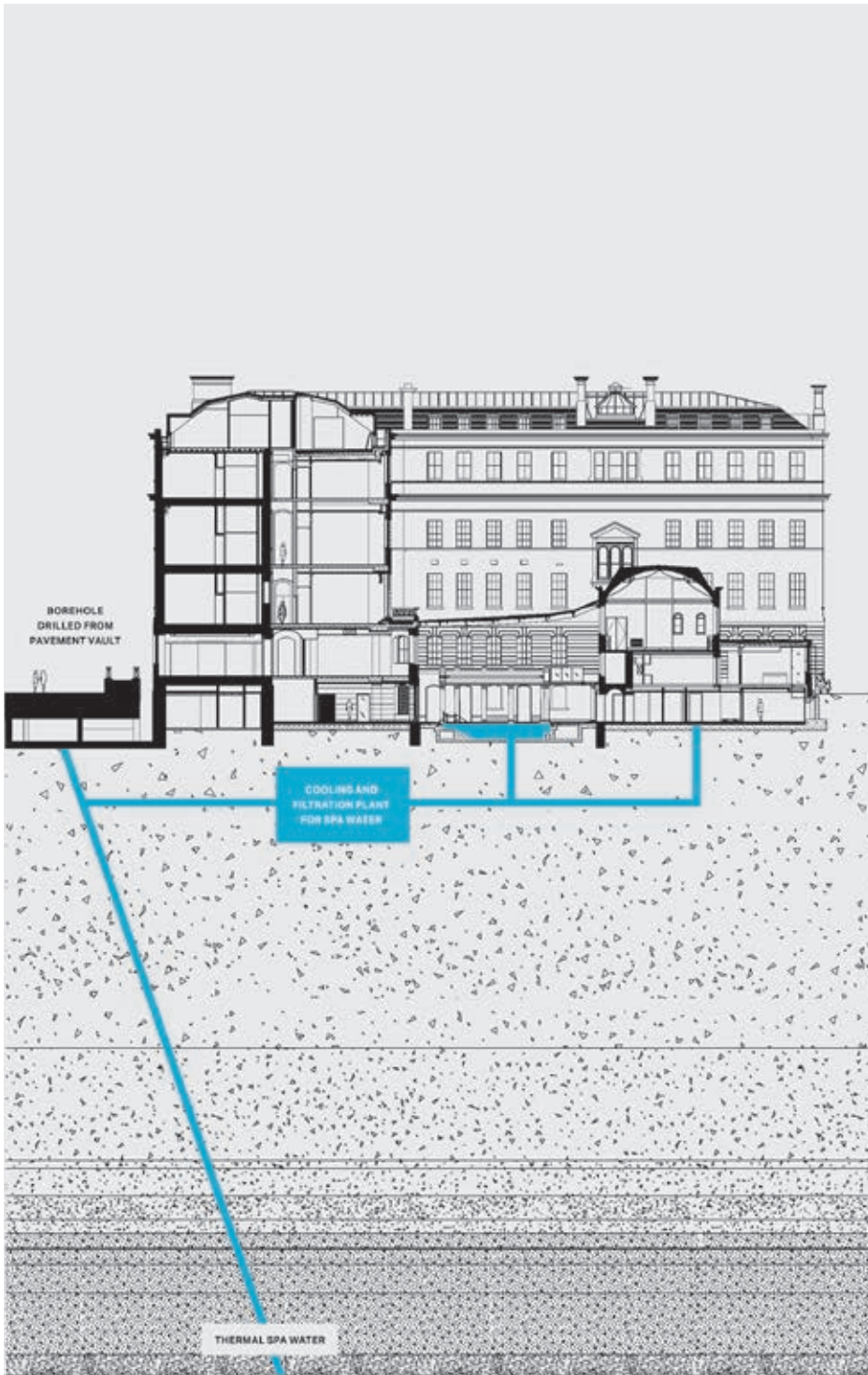
EPR Architects
architects@epr.co.uk
+44 20 7932 7600
www.epr.co.uk



Facilities

The spa facilities include 2 spa guest rooms, 11 luxurious treatment rooms, saunas, a steam room, an ice chamber and a fitness centre. A new 2-storey glass atrium roof wraps around the pool to form an internal courtyard.





Interior

In collaboration with interior designers Champalimaud Design, we are poised to deliver a scheme that will provide a unique hotel experience reflecting the modern day City of Bath, whilst remaining sympathetic to the existing Georgian architecture.



EPR Architects
 architects@epr.co.uk
 +44 20 7932 7600
 www.epr.co.uk

Guestrooms

The new hotel will consist of 99 custom finished guest rooms, suites and public areas that follow the original layout of the John Pinch design, including a destination restaurant, private dining room, lounge, and diverse banqueting facilities.

