

Parliament View, Lambeth

This distinctive residential development sits in the heart of the Lambeth Palace Conservation Area, opposite Westminster Palace and the House of Lords. Our design for this prominent riverside site, set amid a huge variety of building types within the conservation area, provided a high-quality residential development that optimised the views across the River Thames towards the Houses of Parliament. The building responds to the diverse architectural styles of its immediate neighbours, the 14-storey IMO tower to the west and the picturesque, largely medieval 13th century Lambeth Palace to the east.

We designed an organic, sweeping form that maximises the use of riverside frontage whilst usefully creating an enclosed, landscaped forecourt. The sloping roofline responds sympathetically to the contrasting scales of the neighbouring buildings and significantly enhances the Lambeth skyline. The scheme accommodates 190 luxury apartments with an additional eight penthouses that step up and define the rising levels of the roof.

Client

Parliament View Developments Ltd

ServicesArchitecture
Interior Design**Size**

198 apartments

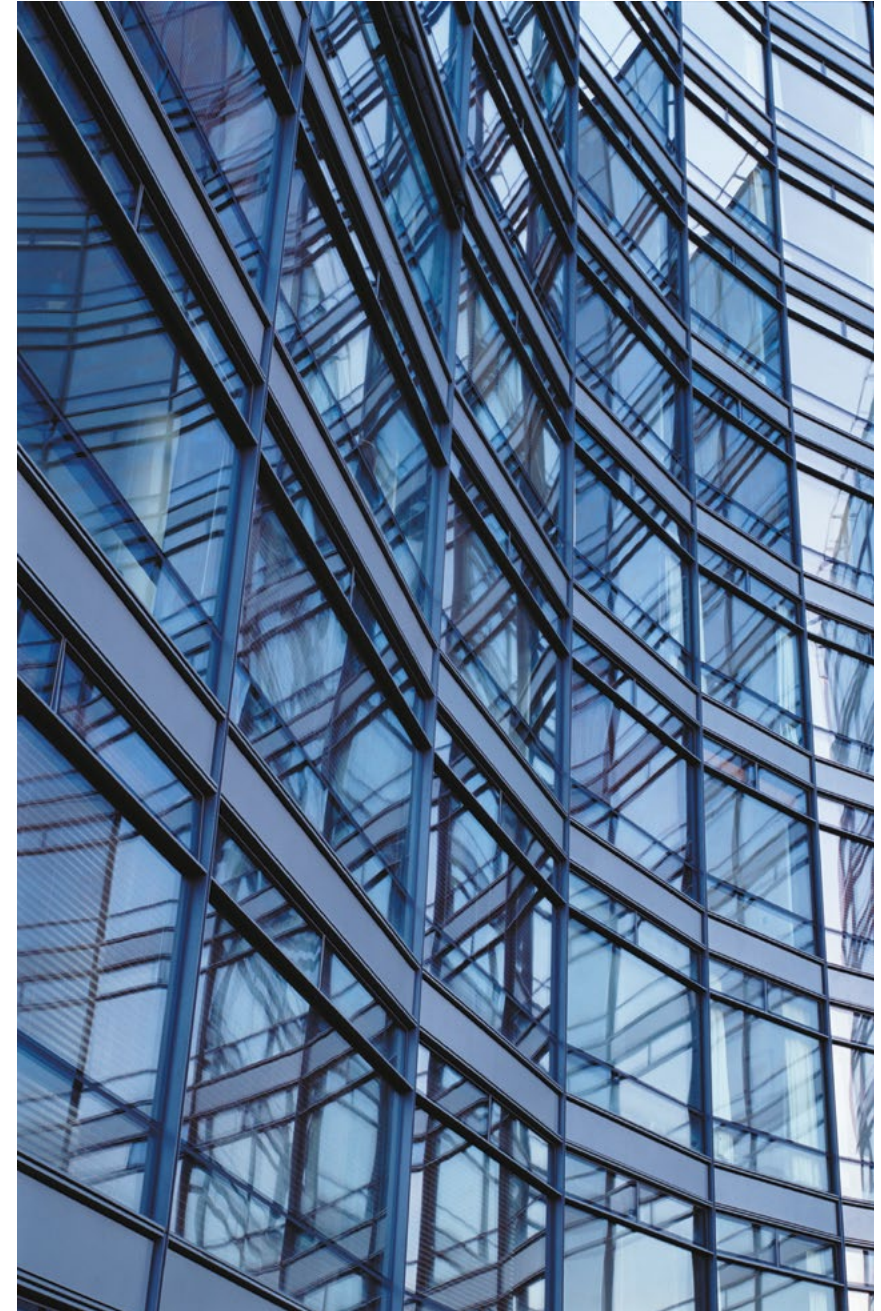


The sinuous plan form embraces the challenging site, optimising key views and maximising the riverside frontage. We took full advantage of the site's two-way slope by raising the ground level by two meters, making it possible to accommodate all parking needs in one basement.

The building was commended by the Royal Fine Arts Commission and English Heritage who were both complementary of the glazed elevation treatment; the reflective qualities of this gently-curving, façeted elevation are constantly evolving depending on the time of day and create abstract patterns of light.



Parliament View, Lambeth





Parliament View, Lambeth