

## Qube, Fitzrovia

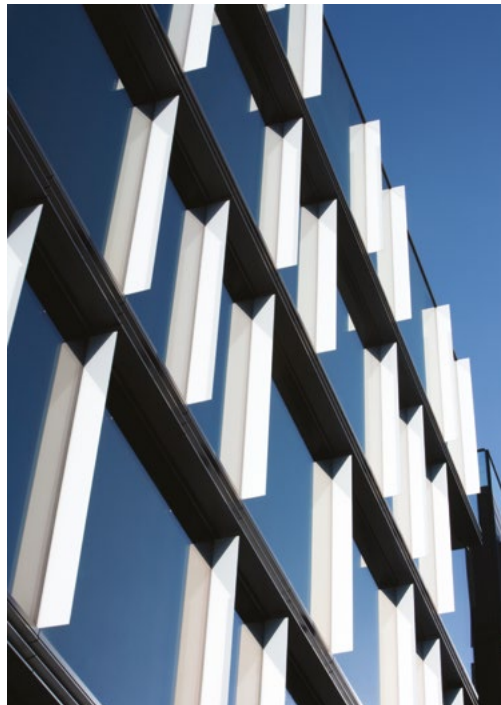
Qube harnesses light across the floorplates to create a spacious workplace. The stepping façades allowed the design to break free from the conventional 'glass box' with crisp vertical brise soleil creating a random, brightly articulated façade. The building offers office accommodation that has been arranged over five floors and positioned around a central atrium. Six retail units front Tottenham Court Road and a stand-alone residential building, made up of six luxury apartments, faces onto Whitfield Street.

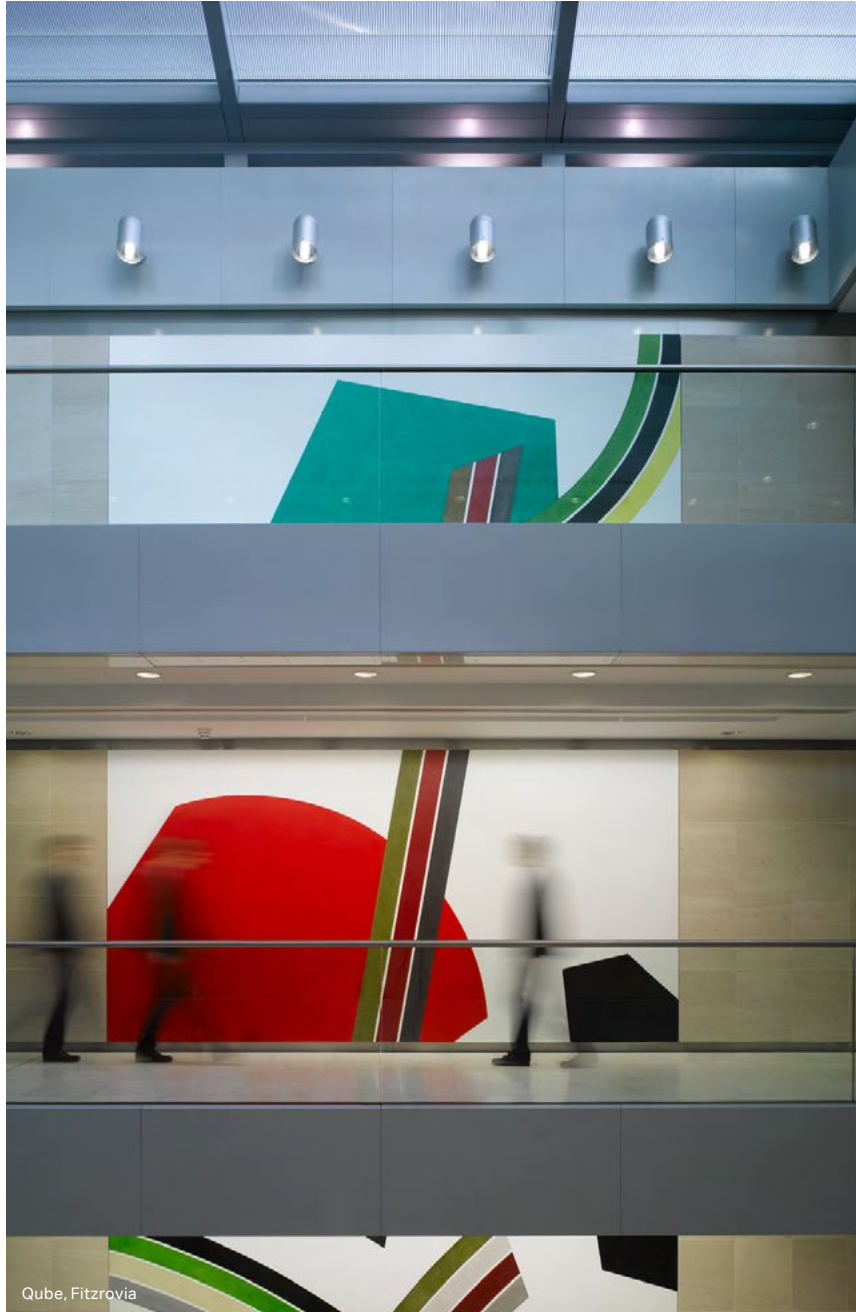
In order to maximise the office floor area the building steps out over the pavement resulting in each successive floor increasing in size. The understated glazed cladding is punctuated by vertical glass fins that pick up the sunlight to dramatic effect on the north and east façades, and create a warm glow within the north-lit office space. This dynamic form enhances its on street presence and gives the building a distinct identity in an area characterised by a strong orthogonal street grid.

**Client**  
Derwent London

**Services**  
Architecture

**Size**  
100,000ft<sup>2</sup>





Art is integrated into the architecture through a collection of vibrant contemporary art pieces by former Turner Prize nominee Ian Davenport. Inspired by the fin theme, they further enhance the strong horizontal space. On the upper floors, the open access balconies leading from lifts to offices are energised by a series of fresco wall pieces by fellow Turner Prize nominee David Tremlett. Each piece has been painted directly onto the plaster, in a design that can be viewed as a five-level composition or individual pieces on each level that are the focal point in the atrium.

The intelligent use of space together with the compelling contemporary art humanises the building with warmth and intimate interiors.





Qube, Fitzrovia